



# Burpham Times

## How to contact us

17 Home Farm, Loseley Park

Guildford, Surrey GU3 1HS

01483 300330

info@guildfordconservatives.com

www.guildfordconservatives.com

Autumn 2013

Issue 004

## CONSERVATIVES LEAD WAY ON PROTECTION OF BURPHAM AREA

■ Guildford Borough Council is undertaking a review of its future development and residents in Burpham are invited to take part. There will be a drop-in session at Sainsbury's, Clay Lane on Sunday, 13 October from 1–4pm to find out more.

Burpham Councillors **Monika Juneja** and **Christian Holliday** are leading production of the blueprint for Guildford's future development – and are calling on all Burpham residents to have their say.

The Local Plan is a framework for the whole borough which identifies growth we may need and how we would accommodate growth for the next 20 years.

The new Local Plan will provide information on the scale and type of future sustainable development, such as new homes, employment, schools, shops, education and transport.

**Monika** said: "The new Local Plan will ensure our future planning policies and proposals reflect the needs of our Borough. As part of this process, we are doing a full public consultation and this is the most exciting consultation that we have ever had in Guildford."

"For example, there is a New Consultation Engagement shop in Guildford at 25 Swan Lane which will be opening early October. The Shop will allow all residents of Guildford and indeed visitors who enjoy our tourist attractions to go in and give feedback."

"It is vital that Burpham residents do get involved – this is the chance to have your say. The Strategic Housing Land Availability Document (SHLAA) has



Conservative Cllrs **Graham Ellwood**, **Monika Juneja** and **Christian Holliday** have pledged their support to retain the green character of Burpham

identified some land in Burpham and we need to be aware of this.

"While we cannot say no growth is an option, we cannot simply agree to development at any cost. We must think things through and understand how development will affect our area, which is why Burpham residents must have their say."

There will be a good opportunity to do so at a drop-in session at **Sainsbury's, Clay Lane, on Sunday, October 13 from 1 until 4pm**. This is one of a series of consultation events so for more details about others and a look at detailed plans, visit [www.guildfordlocalplan.info](http://www.guildfordlocalplan.info).

## NATURE RESERVE BOARDWALKS ARE NOW COMPLETE

■ The Boardwalks at the Riverside Nature Reserve have been completed, enhancing this facility for residents and groups on educational visits.

The wooden walkway, including imaginatively designed seating areas reflecting local nature was been funded through planning obligations and overseen by Guildford Borough Council.

The boardwalks contain a bird hide to allow viewing of local wildlife without disturbing birds. **Christian** and **Monika** are really pleased with the results of the work and a walk along the boards is highly recommended, particularly as the nature reserve has also received a Green Flag award!

## NEW INN LANE PEDESTRIAN CROSSING

■ County Councillor **Graham Ellwood** is delighted to have had this project completed following the petition presented to the Guildford Local Committee.

The funds were provided from The Brambles development and enable, in particular, a safer road crossing point for pupils of George Abbot school. In addition, and in response to residents' requests, the junction of Burnet Avenue and New Inn Lane has been improved and widened.



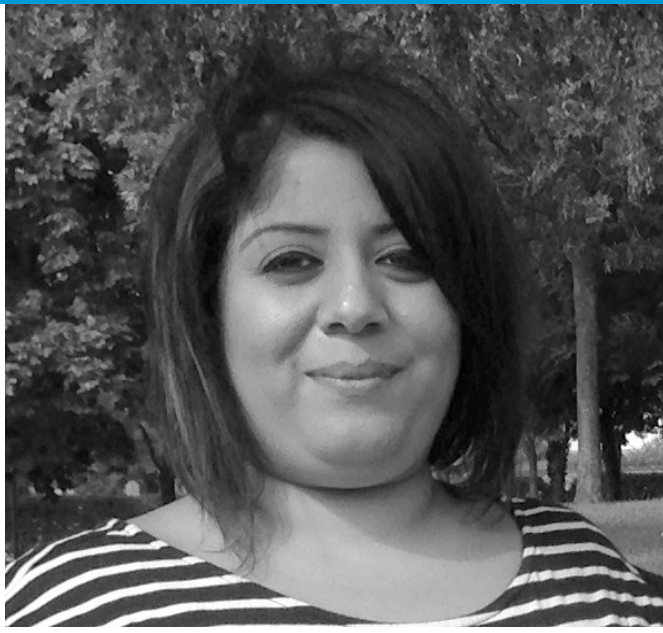
**Guildford  
Conservatives**



# BURPHAM CONSERVATIVE TEAM



**Cllr Graham Ellwood —**  
**Surrey County Council**  
01483 506 845  
graham.ellwood@surreycc.gov.uk



**Cllr Monika Juneja —**  
**Guildford Borough Council**  
Tel: 07748 049 622  
monika.juneja@guildford.gov.uk



**Cllr Christian Holliday —**  
**Guildford Borough Council**  
Tel: 07527 546 792  
Christian.holliday@guildford.gov.uk

## REPORTING BACK TO BURPHAM...



**Christian and Monika at Sutherland Memorial Park**

### ■ Sutherland Memorial Park has retained its prestigious Green Flag status.

We are delighted to report that the Sutherland Memorial Park has yet again won a Green Flag for 2013/14. A Green Flag award is a benchmark national standard established to acknowledge and reward green spaces that meet the highest standards.

Burpham Conservative councillor **Monika Juneja** said:  
“This is great news for Burpham and Guildford. The park remains Burpham’s ‘green lung’ and winning a Green Flag is the ultimate accolade.”

Entrants are judged against eight key criteria including management, sustainability, welcoming feel and community engagement.

### ■ Astroturf enhancements are now also completed.

In addition to the prestige of retaining a Green Flag award the Council has undertaken repairs and enhancements to the surfacing of the astroturf at the Sutherland Memorial park.

A new cricket wicket can also be enjoyed. Developer contributions were used to fund this £121,000 upgrade. This is a major enhancement to the leisure facilities on offer in Burpham.

Burpham Conservative councillor **Christian Holliday** said:  
“More than 40 groups use these important facilities each and every week so its important they are kept in tip top condition. The results are great and will ensure maximum enjoyment by users for years to come.”



**Both Christian and Monika are delighted that the improvements that have been made to the area**

## CARING AND CAMPAIGNING FOR OUR COMMUNITY