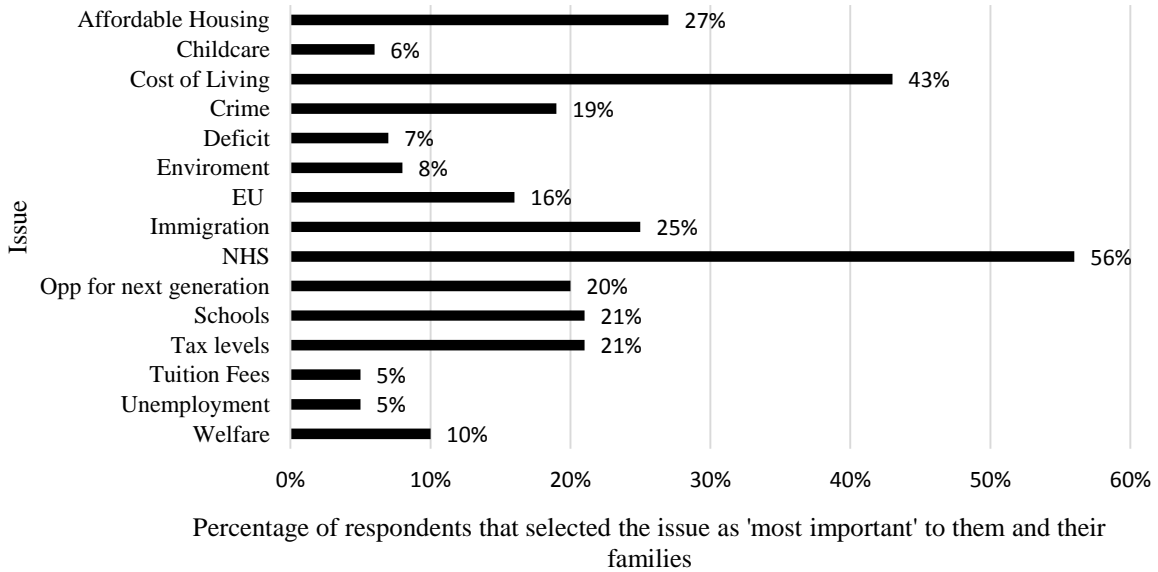


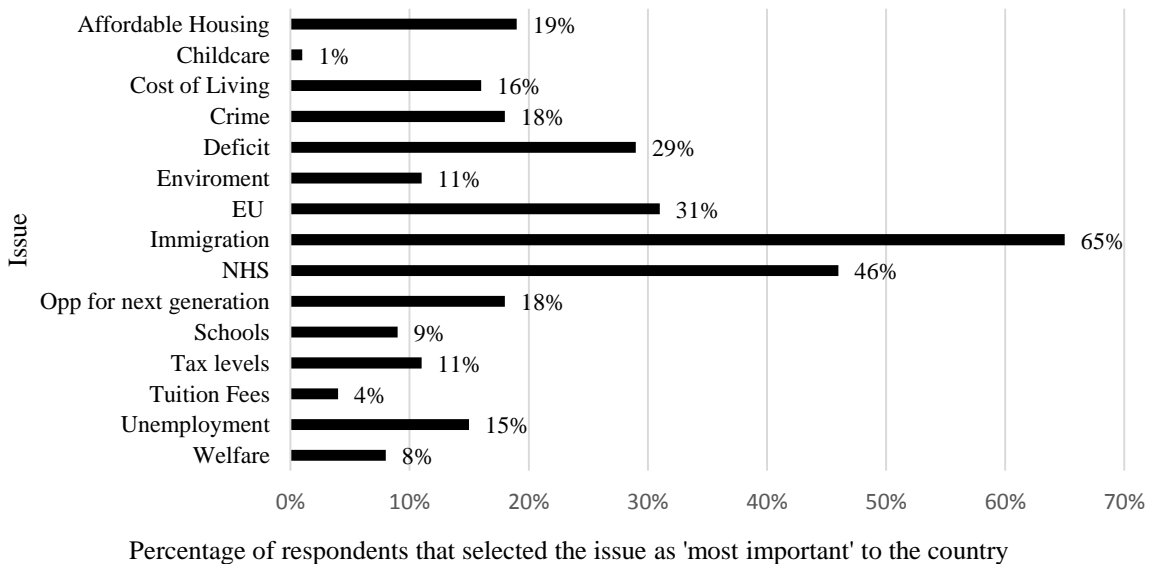
## Data from the Residents Survey

Which of the following issues are most important for you and your family?



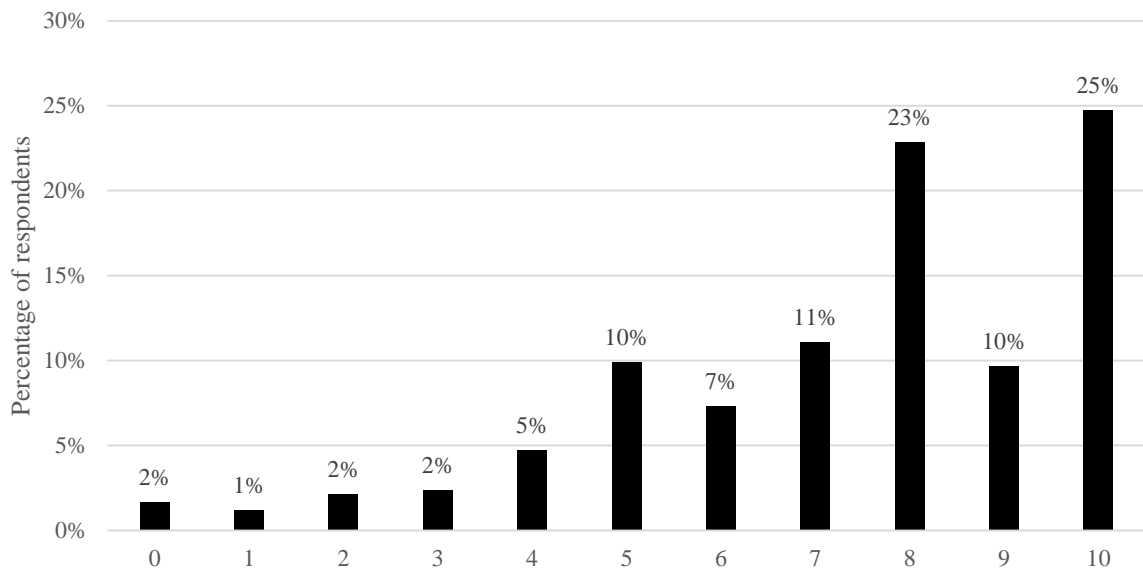
The NHS was selected by 56% of respondents as one of the most important issues for them and their families. This was followed by cost of living (43%), and affordable housing (27%). Only 5% of respondents said that unemployment and tuition fees were among the most important issues to them and their families.

Which of the following issues are most important to the country?



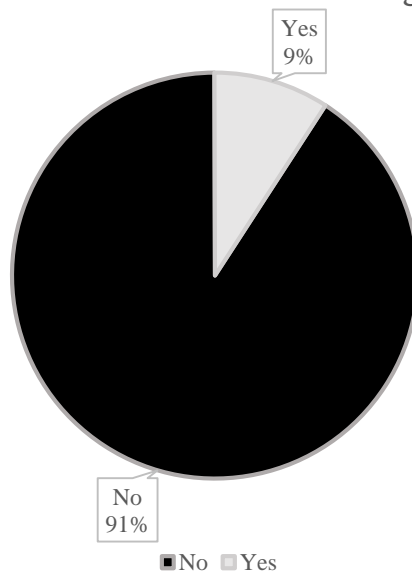
65% of respondents selected immigration as one of the issues that is most important to the country. This was followed by the NHS (46%) and the EU (31%). The cost of living was seen as much less important to the country in general, whilst immigration was seen as a much more important issue to the country in general.

### How strongly do you agree that "dealing with Britain's deficit and debt is the only way to get back to a strong economy"



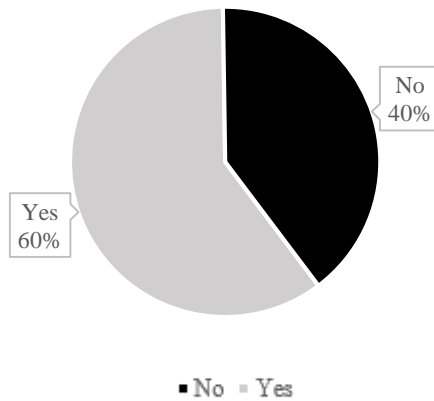
86% of respondents agreed that dealing with the deficit was important. 25% ranked the importance of dealing with the deficit as 10/10. Over half responded to the scale with an answer of 8 or above. The mean answer was 7.37.

### Are houses in Guildford affordable generally?

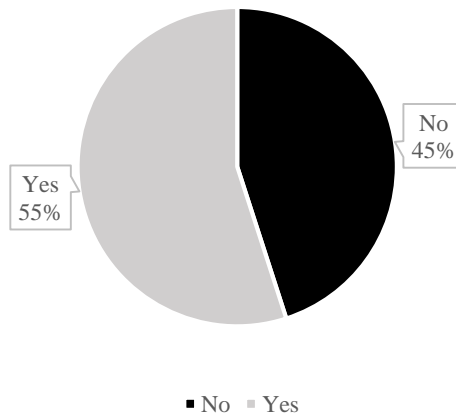


91% of respondents said that homes in Guildford were not generally affordable.

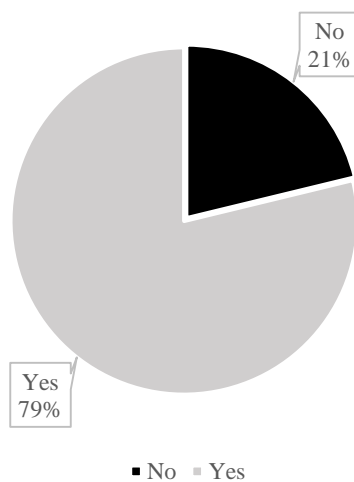
Do we need more homes in Guildford?  
(All respondents)



Do we need more homes in Guildford?  
(Responder owns home)

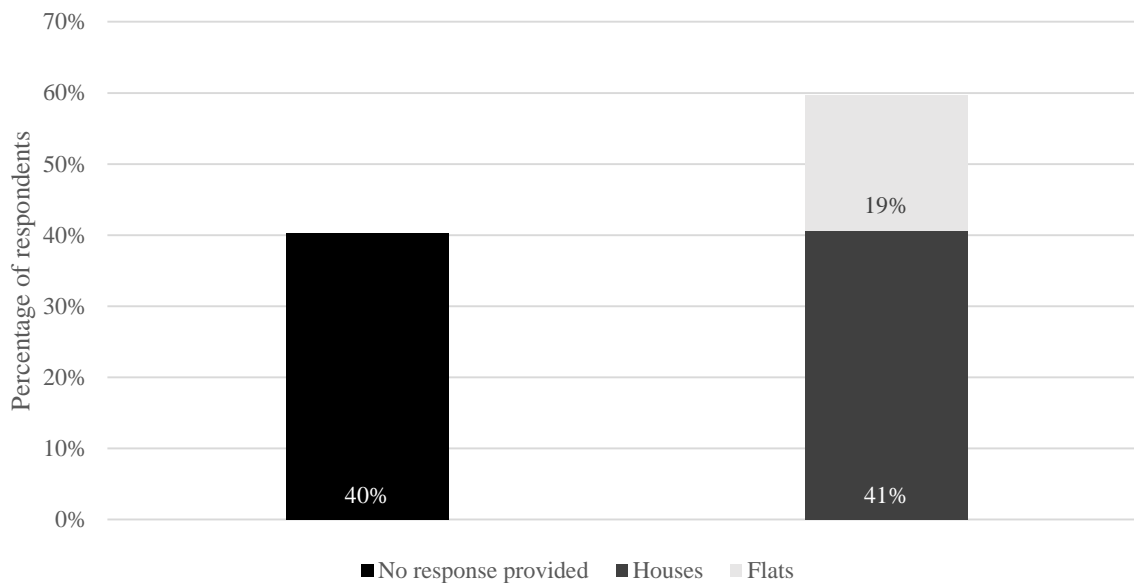


Do we need more homes in Guildford?  
(Responder rents home)



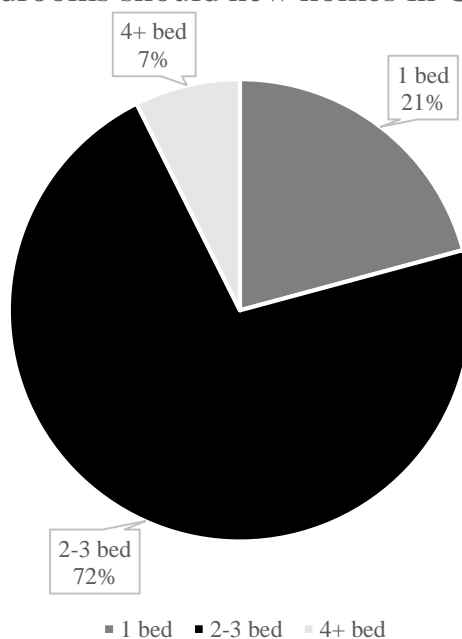
A majority of respondents felt that new homes need to be built in Guildford (60%). 55% of homeowners felt that we need new homes in Guildford. That figure rose to 79% amongst those who rent their home.

### What sort of homes should be built in Guildford?



40% of respondents did not answer this question. Of the 60% of respondents that said they wanted more homes to be built in Guildford, 41% said they wanted more homes to be built in Guildford, 19% said that they would like to see more flats built in Guildford.

### How many bedrooms should new homes in Guildford have?



72% of respondents who favour more housing in Guildford think that new properties in Guildford should have 2-3 bedrooms. Only 7% said that they should have 4 bedrooms or more.