



## News from Burpham Conservatives



Conservatives

# BurphamTimes

Autumn/Winter 2018

## CHRISTIAN AND MIKE ARE WORKING FOR US

Councillors Christian Holliday and Mike Piper are seeking re-election in Burpham next May.

Burpham's Conservative team have been working hard for residents on parking, environmental and other issues and are seeking to continue their work after May next year.

Councillors Christian Holliday and Mike Piper have been re-selected by the Conservatives to continue to get the results that residents want.

Christian has been a Councillor since 2011 and Mike since 2015. Both have been working closely with residents and residents' groups to get our voices heard at the Council on issues such as the Clay Lane Link Road, Gosden Hill and the arrival of Aldi.

Christian said: "I'm really delighted to be re-selected in this ward and want to start knocking on doors and talking to as many residents as possible.

"I look forward to meeting you and hearing your views."

Mike added: "I have really enjoyed the opportunity to serve residents in Burpham for these past three years and I believe we have been effective as a team.

"I really hope to be able to continue to deliver the results residents want to see after May."

Both Councillors live in the heart of Burpham and spend a great deal of time speaking with residents in the area.

Their priorities for the future include further improvements to parking issues, ensuring that the Burpham Neighbourhood Plan is stuck to and getting a balance of new homes for younger and older residents.



Christian and Mike have been standing up for us

### HOLDING ALDI TO ACCOUNT FOR RESIDENTS



Mike has been working hard to ensure Aldi improves its delivery procedures. Residents regularly raise concerns with Mike over deliveries and other matters connected to the Aldi store.

Mike said: "I'm determined to ensure that Burpham gets a good deal from Aldi. The store is situated in the heart of Burpham and how the store manages its car parking and deliveries has major implications for the rest of us.

"I organised a meeting with Aldi which was chaired by the Director of Environment at the Council to discuss feedback from residents and encourage changes to operations at the store. Aldi have been responding pro-actively with the introduction of a banksman for lorry deliveries and improvements to pedestrian safety in the car park."

Please contact Mike if you have any specific issues in connection with Aldi.



### NEW DEAL FOR SUTHERLAND

Over the summer Christian has been working with Burpham Bowls Club and the Sutherland Memorial Park Amenities Club to ensure a fair deal on its lease renewal from Guildford Borough Council.

Christian said: "Burpham Bowls Club is a key organisation in the life of our local Community and its success directly affects the success of the Sutherland Memorial Park Amenities Club and therefore other groups that use the facilities in Sutherland Memorial Park. I am keen to see the these groups receive a fair deal from Guildford Borough Council."

Caring and Campaigning for our Community

Find out more at [guildfordconservatives.com](http://guildfordconservatives.com)



# NEIGHBOURHOOD FORUM PLANS PROGRESS IN BURPHAM

■ **Christian** was elected Chairman of the Burpham Neighbourhood Forum earlier this year and gave evidence at the Examination into the Guildford Local Plan on behalf of the Neighbourhood Forum.

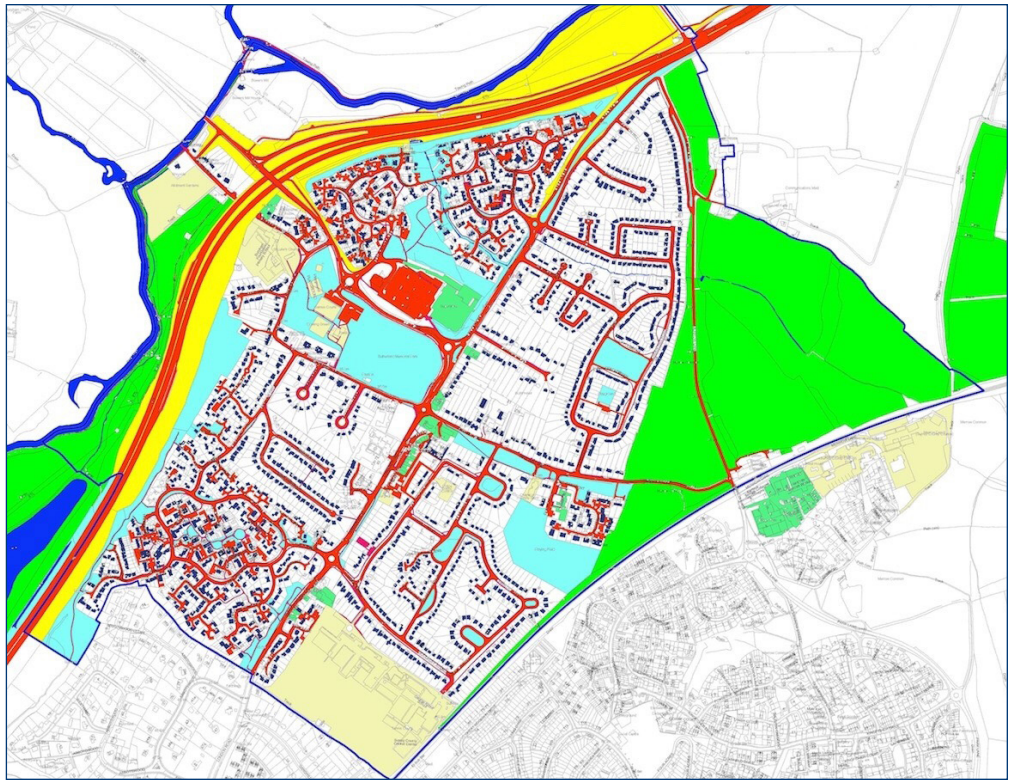
Christian said: “I’m delighted to have been elected Chairman of the Burpham Neighbourhood Forum. Our Neighbourhood Plan, the first in Guildford, is playing an important role in protecting Burpham from inappropriate development and its policies have been upheld by planning Inspectors.

“The Forum also has an important role to play in monitoring the progress of the emerging Local Plan, which will shape the development of the

Borough, including Burpham, for the next 20 years. Mike and I are keen that development in our area strikes the correct balance between housing need and protecting the Green Belt.

“It is important that the Local Plan Inspector appreciates the pressures that already exist on our local infrastructure and that more quality infrastructure is required before major new housing developments are progressed.”

Membership of the Burpham Neighbourhood Forum is open to anyone who lives or works in Burpham. For more information please visit [burphamneighbourhoodforum.org](http://burphamneighbourhoodforum.org) and get involved to help shape your local community.



## HIGHWAYS TO RECEIVE £20M POTHOLE REPAIR

■ Surrey County Council has applied for and received extra funding to help in the fight against potholes.

Surrey has some of the busiest roads in the South of England and not only sees millions of commuter movements each years but is also the subject of development and on the route to our south coast ports.

As a result, heavy vehicles are particularly present and this increases wear and tear on the road surface.

In recognition of this, the County Council has applied for £20million this year and £20million next year in order to prevent the situation of past winters where repair teams have not been able to keep up with pothole reports.

The extra money will allow more teams to be available for fixing potholes as they are reported by members of the public. Last winter, the number of reported potholes almost doubled.

Mike said: “This is good news as it will allow us to be more responsive. We will be fighting along with County Councillor Graham Ellwood to ensure Burpham gets our fair share.”



## News from Burpham

### ACTION ON ANTI-SOCIAL PARKING AT THE SHOPS

■ Christian and Mike support measures which help clamp down on inappropriate parking around Guildford, including the introduction of yellow lines along Burpham Lane (to ensure freeflow of traffic) and limited waiting at Kingspost and London Road parades, to ensure regular churn of cars.

**Mike** said: “Burpham is a busy place and it’s important that local residents continue to have easy access to their properties. Local businesses on the Kingspost and London Road parades can suffer when car users park there for long periods without actually shopping there. The introduction of limited waiting helps support our local businesses.”



## YOUR CONSERVATIVE TEAM FOR BURPHAM



**Cllr Christian Holliday (Guildford Borough Council)**

WRITE 13 Ockley Court  
Burpham  
Guildford GU4 7NF

CALL 07879 423739

EMAIL [christian.holliday@guildfordconservatives.com](mailto:christian.holliday@guildfordconservatives.com)

**Cllr Graham Ellwood (Surrey County Council)**

WRITE c/o Guildford Borough Council  
Millmead House, Millmead  
Guildford GU2 4BB

CALL 07889 846626

EMAIL [graham.ellwood@guildfordconservatives.com](mailto:graham.ellwood@guildfordconservatives.com)

**Cllr Mike Piper (Guildford Borough Council)**

WRITE 1 Weylea Avenue  
Burpham  
Guildford GU 7YN

CALL 01483 575252

EMAIL [mike.piper@guildfordconservatives.com](mailto:mike.piper@guildfordconservatives.com)

**Anne Milton MP**

CALL 0207 219 8392

EMAIL [anne.milton.mp@parliament.uk](mailto:anne.milton.mp@parliament.uk)