



Cllr **David Elms**  
**T 01483 234414**  
**E david.elms5@gmail.com**



Cllr **Dennis Paul**  
**T 07483 252980**  
**E dennis.paul@btopenworld.com**



Cllr **Keith Witham**  
**T 01483 235292**  
**E keithwitham1@hotmail.co.uk**

# LOCAL CONSERVATIVES BACKING GREEN SCHEMES

A Prototype Hybrid Electric Fire Engine has been on trial in Surrey. It has barely any exhaust emissions but has many innovative features. Firefighters saw the vehicle being demonstrated and were able to try out its functions themselves.

Surrey Fire and Rescue is changing how it responds to changing demands. In the past 10 years the number of fires has reduced by 50%, but the number of road traffic accidents has increased by 50%. And last year there were NO fatalities anywhere in Surrey through fires.

There are as many people who die in Surrey each year through drowning, as are involved in fatal road traffic accidents. So more community safety and preventative measures on our rivers will save more lives. Guildford's new "state of the art" Fire Station, which serves Worplesdon, was entirely rebuilt a couple of years ago.



## New electric buses for Guildford Park & Ride - the first in Surrey



Nine new fully electric, zero emission buses are being introduced on the Guildford park and ride service.

The single-decker buses have been built by Guildford based manufacturer Alexander Dennis.

Not only will the new park and ride fleet of buses be smoother and quieter, they will be much better for the environment while also bringing an economic boost to the county because local company Alexander Dennis is building them.

Using electric buses will help to reduce congestion and improve air quality by reducing emissions.



Cllr **David Elms**



Cllr **Dennis Paul**



Cllr **Keith Witham**

# Worplesdon Matters

Winter/Spring 2019

Covering Fairlands; Jacobs Well; Perry Hill and Wood Street Village

## YOUR CONSERVATIVE TEAM IS WORKING FOR WORPLESDON

### CAMPAIGNING TO SAVE OUR LOCAL GREEN BELT - AND WINNING

Four years ago, your local Conservative Team promised you to campaign to protect our local Green Belt in Worplesdon - and we have.

With the active support of many residents and community groups we have, on your behalf, successfully fought off nearly all the proposals from developers to develop green belt sites locally.

#### LOCAL WORPLESDON DEVELOPMENT SITES THAT WERE PROPOSED

(Potential number of new homes proposed - 2,043)

**Hunts Farm, 225 - NOT APPROVED**

**Littlefield Manor, 550 - NOT APPROVED**

**Liddington Hall, 600 - NOT APPROVED**

**Rokers Golf Course, 400 - NOT APPROVED**

**Merrist Wood, 120 - NOT APPROVED**

Guildford Borough Council plans for a Secondary School and a crematorium in Salt Box Road -

**ALSO NOT APPROVED.**

As well as a Football Stadium plan

stopped. We also opposed the plan for a "SANG" (Suitable Alternative Natural Green space) in Wood Street Village for sale to developers. GBC refused but that was overturned on appeal to a Government Inspector.

The one area of development we could not stop was the land by Keens Lane, Worplesdon. Planning Permission was given last November for 148 homes and a Care home.

So - of a total of 2,043 potential new homes in our local Worplesdon Green Belt, nearly all around Fairlands - 1,895 NOT APPROVED with 148 approved.

In August 2014 the Fairlands Community Association Newsletter said: "Too much is being asked of Worplesdon. The housing stock would increase by 71% if all proposed sites are built on. There is the assigned secondary school, crematorium or graveyard and

football stadium".

In summer 2014 Worplesdon Parish Councils newsletter warned: "Threat of massive development in Worplesdon".

**Your Local Conservative Team have worked hard to fight off those threats to our local Environment - and succeeded.**

**With your support, Councillors David Elms, Dennis Paul and Keith Witham will continue to campaign against any large scale or inappropriate development, and Protect our Green Belt.**



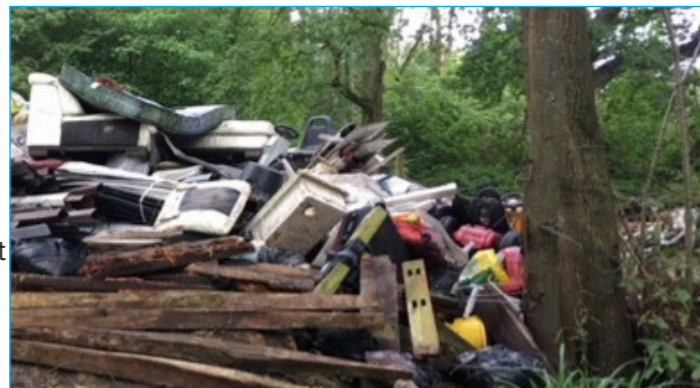
Visit [worplesdon-matters.com](http://worplesdon-matters.com)  
and take part in our Residents' Survey  
Facebook: Search "Worplesdon Matters"

Visit [worplesdon-matters.com](http://worplesdon-matters.com)  
and take part in our Residents' Survey  
Facebook: Search "Worplesdon Matters"

## CRACKING DOWN ON FLY TIPPING

■ Your Local Conservatives have supported a new team set up by Guildford Borough Council in conjunction with the Police to tackle anti social behaviour including Fly tipping - the Joint Enforcement Team (JET).

Fly tipping is illegal with a fine of up to £50,000 and imprisonment. We are urging GBC to do more to catch and prosecute the perpetrators.



## SUPPORTING WEEKLY BIN COLLECTIONS

■ We will support maintaining the current weekly collections, alternating between rubbish and recycling, including a weekly food waste collection.

Guildford Borough Council is 12th out of 350 English Councils, now recycling 59.7% of its waste - but although nearly 60% is nearly top in England we want Guildford to be even better!

We will continue to invest in our recycling services as part of the new service design when we replace the recycling and waste fleet in 2020. The new fleet will deliver higher levels of recycling and reduce costs to Worplesdon residents.

At the moment, we have a 96% satisfaction rate in waste and recycling services among Guildford residents with 99% participation in recycling and 99% in refuse collections. Although the rise in food recycling participation is very large - up 29% since 2014 - we still have work to do in that area as participation is 86%.

Dennis, David and Keith said: "We want to thank the residents for their hard working in recycling so much."



Cllr **David Elms**



Cllr **Dennis Paul**



Cllr **Keith Witham**

**LOCAL** councillors, who are **LOCAL**.  
Representing **LOCAL** residents. On **LOCAL** issues.  
**YOUR** issues are **OUR** issues.

Please tell us about your concerns - take part in our **LOCAL** online survey and help us to keep Worplesdon special.

## SUPPORTING OUR LOCAL VOLUNTEERS AND COMMUNITY

■ Voluntary and Community Groups are the life blood of the community. Over the past few years, 30 local groups and 34 projects have received a small Surrey County Council grant to help their activities through sponsorship via Cllr Keith Witham, with some matched funding by Guildford Borough Council.

### FAIRLANDS

- Fairlands Community Association (FLGCA); four grants - towards a Fairlands Festival;
- Grass mower, printing machine and Xmas lights;
- Fairlands Patient Liaison Group, publicity for a Cancer Awareness event;
- Footpath 458 environmental restoration project;
- Fairlands Cricket Club, field renovation;
- Restored telephone box at Liddington;
- Fairlands WI for restoration of local history book;
- Liddington Hall litter bin.



### JACOBS WELL

- Jacobs Well Village Hall. Building Scheme grant. (Matched funded SCC/GBC grant);
- Jacobs Well River of Life Friendship Group, new PA equipment;
- Jacobs Well Scouts, towards hall maintenance;
- Jacobs Well Residents Association, gazebos;
- Keep Fit Group, Jacobs Well;
- Restoration of White House Pond (via Worplesdon Parish).



### WOOD STREET VILLAGE

- New grit bin, Roman Farm Road / Cook Way (joint with Worplesdon PC);
- Wood Street Village Association, marquee and PA equipment;
- Wood Street Cricket Club, sight screen;
- Wood Street Primary School, towards new playground area;
- Wood Street Beavers Group, for tea water heater;
- St Albans Church, dishwasher and seating for youth cafe;
- Wood Street Horticultural Society, daffodil bulbs for The Green;
- Little Crickets Nursery, Wood Street, towards lease costs;
- Restored telephone box, Frog Grove Lane.



### WORPLESDON

- Worplesdon Memorial Hall - two Grants towards new kitchen and chairs; plus match funded SCC/GBC grant;
- Worplesdon and District Bridleway Association, equipment and publicity stands;
- Replacement safety fencing outside Worplesdon Memorial Hall;
- Sime Gallery, Worplesdon, help to set up new website.



### LOCALLY BASED - BUT GUILDFORD WIDE

- Guildford Arts Society, for publicity display stands;
- Care and Consideration with a Smile, Disability Charity, event gazebo;
- Surrey Wildlife Trust, equipment for volunteers;
- Cadence Drum and Bugle Corps, youth band, for musical instruments.