

Dear Member,



I am writing this foreword during National Volunteer Week, a subject which is very close to my heart. Firstly, as a holder of many volunteer roles over the years but mainly in recognition of the value and importance that volunteers make to our society. This has been highlighted yet again during the recent Covid-19 pandemic, with many examples and heartwarming stories of people helping their neighbours, local communities and supporting the NHS.

This positive approach to volunteering was also highlighted in our recent members' survey, with over half the respondents saying they would be interested in helping with our work. This interest is in addition to the many people who already volunteer to help us spread the Conservative message.

To you all, I'd like to take this opportunity to say a big 'thank you'. We could not achieve as much as we do, nor meet the challenges ahead, without your contribution.

Thanks also to those of you who responded to the member survey. The Management Team was delighted with the results which showed a 50% increase in satisfaction with GCA over the last year. The main area of increased satisfaction was in our communications, which some members felt had 'dramatically improved'. We aim to use the insight from the survey, together with your helpful comments and ideas to shape our plans for the coming year.

This 'bumper' edition of the newsletter contains an update on all areas of work and, as you will see, there is a lot going on despite the lockdown! Of particular note are two of our new initiatives - the Policy Development Forum and our virtual members' briefings, both of which came about as actions taken following the membership survey last year.

I wish you a safe and enjoyable summer - whatever the 'new normal' looks like.

A handwritten signature in cursive script that reads "Sallie".

Sallie Barker, MBE
Chair, Guildford Conservatives

UPDATE FROM ANGELA RICHARDSON MP



Dear Members,

It has been two months since I last wrote to you. In that time my colleagues across the House and I have seen an increasing number

of emails come into our already busy inboxes. At the same time, we have in the last weeks moved from a hybrid proceeding using Zoom to a physical proceeding and then back again. I would very much like to set the example and get back to work safely, but we see, even as more shops open again this week that the process is slow.

Westminster is a vastly different place due to Covid-19 and while I have been working from Westminster for the last several weeks, access to the Chamber to participate is strictly limited. A relaxation to the 'two metre' rule will not only make opening up businesses and schools more straightforward but will make Parliament work more effectively too and like many of you I have a quiet longing to see glimpses of the world we knew before Coronavirus.

"The Prime Minister will over the weeks keep laying out the roadmap to recovery, both economically and socially"

There are adaptations that have been forced upon us, especially digital, that are positive, and I would not like to see some of these advancements lost. We will have to weigh up the opportunity versus cost of more people working from home in the future as this will have a significant impact on commercial property, for instance, but many have reported that it has been an improvement to their personal wellbeing. If we believe in market freedoms, we believe in progress and perhaps we have been

catapulted full speed ahead into the next industrial revolution.

Locally, we have seen a huge reduction in the number of cases of Covid-19 and deaths recorded at the Royal Surrey. This is most definitely a positive direction of travel and I celebrate the excellent news this week of the new discovery of a drug to significantly decrease mortality rates in the most serious cases.

This weekend will be critical in determining whether the mass gatherings and protests two weeks ago will see a spike in new cases. I sincerely hope not, but there is evidence in both the US and Australia of a rise again following protests there.

While the Black Lives Matter protest sparked by the horrific killing of George Floyd was a demonstration of still more work that needs to be done in this country for everyone to feel equal, the senseless violence and desecration of war memorials that we hold very dear was intolerable. So too was the senseless response by other extreme elements last weekend. The London Mayor can in no way pat himself on the back for his handling of the breakdown of behaviour over several weeks and the mixed response that each protest received from our fantastic police who worked in difficult conditions under the orders they were given.

Behavioural experts predicted that lockdown would be difficult to sustain over a significant period of time and we have witnessed public elements of it, however, more concerning for the Government is what is happening in

homes across the country, hidden harms to our society.

This week has been a rather difficult week for the Department of Education, who I work closely with. I'm sure we can all agree that getting all children back to school is a top priority, especially those children from difficult backgrounds. Teachers have been heroic over these many months providing school space for children of key workers and those with a social worker or an education plan. There is a large support package being worked on as I type to help children catch up with these last few months. Mental health support for our young people is important and I know how difficult it has been, having three teenagers in critical years of schooling and exams.

We may seem slightly on the backfoot in terms of the Free School Meals decision to continue over the summer holidays, but the Prime Minister was on excellent form during PMQs this week and managed to turn the tables on Sir Keir Starmer who would not go against the Unions and Labour-run councils who are being obstructive in the process of returning children to school.

We are quickly pushing through legislation and I am expecting to have the summer recess cut short. I have spent the last two weeks sitting on the Immigration and Social Services Bill Committee, part of legislation we are putting through to help us leave the EU, and several other Bills are at Committee stage.

We must not forget in all of this the manifesto we were elected on to deliver with an 80 seat majority. There will no doubt be difficult times ahead and there will be times when the polling looks difficult for our party, but we will keep the faith and I will be resolute in my support for the Prime Minister and loyal to our Conservative party

and values, though many encourage me on a daily basis to vote against the Government. We have much to do!

The Prime Minister will over the coming weeks keep laying out the roadmap to recovery, both economically and socially. We have all quite frankly been amazing for so many weeks and put up with so much. The generation in WWII were known for their Blitz Spirit. We might not have a name for it yet, but in decades to come this time will be remembered and we will be remembered for our stoicism, our optimism in the face of never-ending lockdown and our enthusiastic support of our key workers and frontline staff in our NHS.

Thank you all for your continued support and I cannot wait to get out and knock on some doors with our fantastic activists soon!

Best wishes,
Angela



EVENTS UPDATE



It has been fantastic to see so many of you logging onto our recent Q & A sessions.

It appears we are all getting increasingly proficient with the new technology and reaping the benefits immensely since lockdown has begun.

In early April, we kicked off with an informative session with Angela Richardson, our MP.

Angela answered not only questions on the current circumstances we find ourselves in, but also updated us on what she has been doing to tackle the challenges that face the constituency and the people within. We ended the session right on time for us to make our way to our doorsteps and clap for carers, NHS staff and key workers, who have really made the difference in these troubled times.

Our next virtual guest was Tim Oliver, the Leader of Surrey County Council. Tim also filled us in on the inspiring work that Surrey County Council, its employees and volunteers have been doing in response to Covid-19. SCC is not only working to support the shielded in Surrey, but also the new arrangements for NHS Headley Court, and plans going forward for the re-opening of schools. Just a small selection of the extra work being undertaken in addition to its normal business!

In the third event in our online series, we welcomed Professor Max Lu, Vice Chancellor of Surrey University, who updated us on the great achievements at the University, including the work they are doing for Coronavirus research.

I am sure for those of you that were able to attend, these were worthwhile events, and we thank Angela, Tim and Max for their time.

We are endeavouring to add more virtual and perhaps face-to-face events in the coming weeks and months, so please do watch out for information via email.

FORTHCOMING EVENTS

Q & A with Angela Richardson MP

Friday 19th June at 7pm

Another chance to catch up with Angela and ask questions virtually via Zoom. As lockdown eases, I am sure we will all have plenty to discuss! Email info@guildfordconservatives.com to register for this event.

Q&A with the Rt Hon Jacob Rees-Mogg MP

Tuesday 7th July at 7.30pm

Jacob will give a talk to members about the latest developments on Brexit; where we are now and what comes next. He will then take questions from our members online, about his work as Leader of the House of Commons, and more. Cost is £15 per household or £10 for Young Conservatives - register to attend via the events page of our website www.guildfordconservatives.com/events

FUTURE DATES FOR YOUR DIARY

Friday 25th September - Quiz Night with Fish & Chip Supper

Friday 30th October 7.30pm - Evening Event
More details to follow in due course

Sunday 13th December 12.00pm - Christmas Drinks with the Richardsons

Please note all events are subject to change, according to Government Advice.

Barbara Goss
Deputy Chair Membership & Fundraising

STOP PRESS.....

We are very pleased and proud to let you know that Guildford Conservative Association has been ranked 3rd in the South East in the Association Incentive Scheme and the top association in Surrey.

Associations are awarded points for several criteria including member engagement, events, data entry, campaigning and strategy. For the coming year, new categories will include Policy Engagement via Conservative Policy Forum and Business Club events.

GUILDFORD YOUNG CONSERVATIVES



Guildford Young Conservatives has continued to strive forward, making progress on our proposed plan and increasing membership. We have currently increased our membership by 12% and are aiming to significantly build upon this figure in the coming months to shape the future of Guildford Young Conservatives.

It was great to receive feedback from the survey I sent out to the GYC members. This has allowed a valuable insight into what they would like to gain from being a member; resulting in a plan being created to satisfy requests that we have received. The committee are working hard to fulfil these requests and are organising events for later on in the year.

We are looking forward to hopefully hosting a few speaker events and there is the potential to join forces with other local Young Conservative groups. From this I am looking to grow the Conservative Youth more, by working together with other like-minded people. I believe that our expanded network will assist our membership growth.

Lastly, the partnership with Surrey University is becoming a success with our first event looking to be held in October, when the students return to their studies. This will be an exciting time for us, and we very much look forward to welcoming this society to our events.

I believe that we have solid foundations, ready to be cemented during a difficult time for all.

I wish you all well and look forward to when we can hold our socials together again.

Becky Phipps
Chair Guildford Young Conservatives



GCA POLICY FORUM

The Guildford Policy Forum Facebook Group has now been set up just for our members who are now actively commenting on the CPF documents online. All comments will be collated and sent on to CCHQ as part of policy creation for the Party. If you haven't yet signed up but would like to get involved, please email Bev on info@guildfordconservatives.com or me at matt.furniss@guildfordconservatives.com.

Some of our members took part in a national CPF Question Time event with senior political figures hosted by CPF Director, Anna Firth, regarding the Environment and Animal Welfare. We're following this up with our own Zoom session on 1st July to discuss this and the papers that we will submit to CCHQ.

We also have a WhatsApp Discussion Group for all members. If you would like to join the group, please let me or Bev know.

The Parliamentary Boundaries Bill was introduced in the House of Commons last week

This Bill retains 650 seats. It increases the time between reviews from 5 years to 8 years and provides for automatic implementation of the Independent Boundary Commissions Final Proposals.

The four Boundary Commissions (England, Scotland, Wales and Northern Ireland) are required to report their final proposals to the Speaker of the House of Commons no later than 1st July 2023.

It therefore allows a period of 2 years 7 months from the review date of 1st December 2020 until finalisation. During this period there are 3 consultations. Firstly the publication of the initial proposals on which there are 8 weeks of consultation. Secondly the secondary consultation period which will now include the Public Hearings and will last for 6 weeks. Then the third consultation period on the publication of the revised proposals which will last 4 weeks. In future reviews the time period will increase to 2 years 10 months and the second and third consultation periods will be increased to 8 weeks.

The Government is not proposing any changes to the arrangements on quota with electorates within + or – 5% of quota or to the 4 preserved Constituencies, therefore we don't expect there to be any changes to the Guildford Constituency.

Matt Furniss
Deputy Chair Political

PCC UPDATE



I was delighted to have been asked by Charlie Chirico to be her Deputy Police and Crime Commissioner if elected. Running on a joint ticket, we would have Charlie's experience as a Criminal lawyer, and mine, as an experienced operational Police Officer. This will give us a unique combination of experience to offer the electorate, with a strong Conservative vision.

Having announced the joint ticket on social media, the lockdown kicked in. As you can imagine, our plan has had to be flexible.

One of the early Government announcements made, was the postponement of all elections until May 2021. In Surrey this will affect the Surrey County Council, Borough Council elections and of course, the PCC election. I know many candidates have been working hard towards the May 2020 date. As disappointing as the news was, it was the right decision to take. Public safety must always come first.

Thinking ahead, May 2021 is a year away. Seems plenty of time, but as we all know, time will fly, and we always end up chasing our tail during election campaigns.

Working closely with Tim Hall, from Surrey County Council, we have agreed that the elections need to be co-ordinated. Since 2015, we have fought so many elections, we have become somewhat battle weary. To combine all three elections as one will prevent duplication of leaflets, canvassing and most importantly, costs.

SCC leaflets will have one side dedicated to the local candidate, and the local issues, the reverse side will outline the priorities for the PCC. I am sure you would agree, far easier to deliver one leaflet, than having multiple deliveries.

Each Association will have a nominated Liaison member, and for the Guildford Association this will be Matt Furniss. There will be regular meetings which will agree the co-ordinated approach to be taken.

When we will start the election campaign, I don't know. It will be when it is safe to do so, and appropriate in the circumstances. In the meantime, we can use the technology available to us to hold virtual meetings, and this process has started.

I will update members later in the year when the campaign has moved on, but in the meantime, keep well and stay safe.

Kevin Deanus

CAMPAIGNING UPDATE

We are starting to gear back up to active campaigning and will be launching a new Residents' Survey which we will promote digitally. It is unlikely that we will be conducting any face-to-face campaigning for the near future. We are also preparing leaflets and knock drop and collect surveys to go out and raise our profile as restrictions ease.

We will also be moving to complete our last few candidate selections for the SCC elections next year.

If you would like to get involved please do email me at matt.furniss@guildford-conservatives.com



ANSWERS TO LAST EDITION'S BRAINTEASERS

The answers to the anagrams in the last edition kindly set for us by Igor, are as follows:

Boris Johnson; Theresa May; David Cameron; William Hague; Jacob Rees Mogg; David Davis; Norman Tebbit; Sajid Javid; Iain Duncan Smith; John Major; Bob Hughes; Sallie Barker; Matt Furniss; Angela Richardson; Michael Gove; Kenneth Clarke; Ruth Davidson; Jeremy Hunt; Margaret Thatcher; George Osborne; Liam Fox; Priti Patel; Winston Churchill; Dominic Raab; Phillip Hammond; Amber Rudd; Benjamin Disraeli; Robert Peel; Andrea Leadsom; Rishi Sunak; John Redwood; Anna Soubry; James Cleverly; Matt Hancock; Brandon Lewis; John McCain; Donald Trump; Caroline Ansell

We're still working on the answers to the emoji quiz.

Improving Highways Information for Residents

As part of our programme to provide easier access to information for Surrey Residents, we have made an interactive map of the council's highways datasets, which residents will be able to access online. This will be updated automatically. You can access the map here: [Surrey Maps](#) This allows residents not only to see which works have been completed in their area but also our planned works for improvement on the roads, footways, drainage, traffic systems, bridges and barriers.

Rights of Way in Surrey

We are investing £3m more into Rights of Way across Surrey to improve the standard of our countryside routes. You can help us too by logging where extra attention is needed. Please use the log a fault button here: [LOG A FAULT](#) to let us know how we can make improvements on the network.

Surrey County Council Bids to make Farnham an all-electric bus town

A proposed £10 million scheme could see 25 new ultra-low emission buses coming to the streets of Farnham. Surrey County Council is working with local operator Stagecoach on the plans. The intention is to bid for funding from the government's all-electric bus town scheme.

This is just one part of SCC's commitment to spend more than £297 million over five years to help the county tackle climate change – including supporting a move to more environmentally-friendly ways of travel. This will include investing in charging points to encourage residents to swap to electric vehicles and to use rights of way such as improved footpaths and brideways.

The government has given councils emergency measures during the coronavirus pandemic to temporarily create wider pavements and new cycle paths to ensure people can keep a two metre distance from people from outside their households and continue to use alternative ways to travel. The county council is waiting to hear its share of a national £250 million fund to support this.

The county council is working with Surrey's borough and district councils to identify locations where improved spaces for walkers and cyclists would help residents to get out and about as the lockdown is gradually lifted. This includes town centres and other shopping areas, where wider pavements would give people confidence to return to the shops and support our high streets – once government restrictions allow more shops to reopen in the coming weeks.



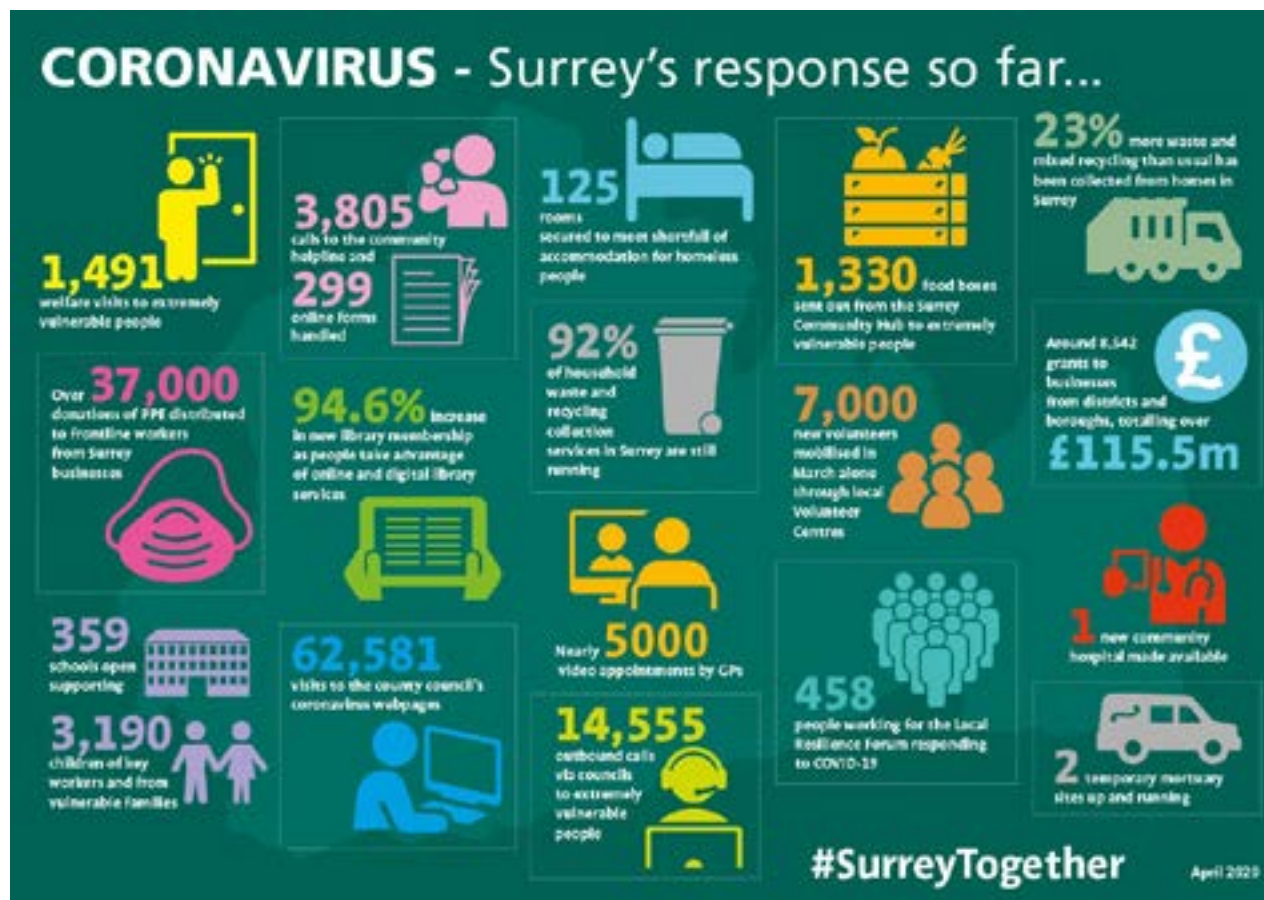
Supporting Surrey Residents through COVID-19

There has been a fantastic response by residents in our local communities to respond to the challenges of COVID-19.

Surrey County Council has been doing a large amount of work not only on the front line but also behind the scenes. This is demonstrated in the infographic below.

Surrey Care Association is also at the heart of the response, working closely with SCC to ensure Care Settings have the correct, up to date guidance around PPE and infection control.

Surrey is also moving quickly to embrace more digital care delivery platforms, using the latest technology and innovation to deliver more effective health and social care. This includes being the first area in the UK to establish a partnership with Facebook



Supporting our Care Homes

Care homes and care workers in Surrey have been at the forefront of the fight against COVID-19, with the two most pressing issues being access and use of PPE and Testing.

Surrey Heartlands and Surrey County Council have worked closely on a programme of specific training for care settings around testing and infection control. Four super trainers have been recruited and are responsible for 'training the trainers' to cascade down to 424 care settings across Surrey.

and NHSX to provide video calling technology for isolated care home residents to connect with their families.

Matt Furniss
Surrey County Councillor for Shalford
Division and Cabinet Member for
Highways



During this strange new world Guildford BC has certainly been alive politically over the past few weeks. R4GV leadership used a perceived 'threat' of working with the Conservatives in Guildford as leverage to press the Lib Dems into a two phased hand-over of power, apparently on the undertaking that R4GV would not appoint any Conservative members into Executive positions on the Council.

We have had the situation where Conservatives are being asked to assist R4GV on several key issues, but from a position that is behind the scenes rather than getting public recognition. The Executive is now made up of 8 members with 4 Lib Dems and 4 R4GV.

In an extraordinary move it was also announced that Council Leader Caroline Reeves (Lib Dem) will step down before September to enable a Full Council vote to switch the balance of power by installing Jos Bigmore as the Leader of the Council. As the combined numbers of the Lib Dems and R4GV make a clear majority there is nothing the Conservative group can do to influence the decision making process.

Otherwise it is a sorry tale of treading water and I fear the Covid-19 situation will be used as an excuse by R4GV as they take control of the administration to reverse election manifesto promises and either suspend or cancel many of the projects that were being progressed under the Conservative Corporate Plan. In particular I suspect that infrastructure projects will suffer and that may have an impact on the Local Plan as we closely tied public gain to the required Local Plan development numbers, and we may find ourselves in a position of resisting proposed strategic site development due to failings in required infrastructure to support planned development.

We held our annual Group Meeting in early May attended by GCA Chair, Sallie Barker. I was returned as Group Leader with Nigel Manning as Deputy Group Leader, Graham Eyre as Group Treasurer and myself as Group Head of PR/ Communications. For some strange reason no-one put themselves forward as Group Secretary and that position remains open. It is with regret that over the last few days I have stood down as Group Leader with effect from 13th June, and we will now need to decide how we take the Conservative/GCA message forward.

On behalf of Conservative members at GBC I wish all GCA members a safe and healthy Summer and I hope that by the next newsletter we are getting back to the 'new normal' in a positive way across our wonderful Borough.

Paul Spooner
Guildford Borough Councillor for
Ash South, Ash Green and Tongham



As you are all aware, we are now living in a very different world to the one anticipated when we all fought the May 2019 elections.

The Conservatives continue to serve as the opposition party in Waverley.

Like all Councils across the UK, emergency powers were approved for the Leadership Team, led by the Chief Executive Tom Horwood. All Group Leaders are briefed on a regular basis, but the day to day running of the Council is conducted by the Officers.

The Council has distributed £20million of Business Rate Relief, as well as £20million in Business Grants.

In the early days of Lockdown the Council's focus was on the health and safety of our residents. The authorities identified over 4000 vulnerable people in our Borough and the officers set about calling every one of them to ascertain the level of support required for each person. There were also toilets and car parks to close, staff to set up to work remotely from home, and all the government announcements to communicate, as well as all the government grants and food boxes to deliver.

Planning Enforcement has been a major challenge during the Lockdown. Quite a number of people have taken advantage of the Lockdown to demolish or erect structures, knowing that site visits are currently not happening. This has kept many Councillors' inboxes full. Happily, our Planning Department appears to be functioning more effectively now and some drive-by visits by Officers have been done.

The Conservatives are keeping up pressure to progress work on Part 2 of the Local Plan. Waverley Borough Council have now called for information on available sites for housing development in Haslemere and Witley to be considered for potential inclusion in the Plan, as well as potential sites for gypsy and traveller accommodation.

As we come out of Lockdown, Waverley, being a very rural borough, has had to contend with thousands of people taking to the countryside. This creates problems for local residents and emergency services with overcrowding and inconsiderate and dangerous parking at popular beauty spots like the Devils Punchbowl in Hindhead and Frensham Ponds, near Farnham. Clean up operations to remove the rubbish has put extra pressure on already stretched Council resources.

Waverley has managed to maintain a pretty normal rubbish collection service throughout the Lockdown, sharing bulk waste collection with Guildford Borough Council. This is despite larger amounts of domestic waste being generated as all members of households remain at home during the Lockdown.

Chris Howard
Waverley Borough Councillor for
Shamley Green and Cranleigh North

HAVE YOUR SAY ON LOCAL ISSUES

There are a couple of consultations going on at the moment that you may wish to be respond to. These are highlighted below.

GUILDFORD LOCAL PLAN: DEVELOPMENT MANAGEMENT POLICIES - ISSUES AND PREFERRED OPTIONS CONSULTATION

Guildford Borough Council adopted the Local Plan: strategy and sites in 2019. They have now started to work on the second part of the Local Plan; the 'Local Plan: development management policies' document, which will provide further and more detailed planning policies to use when they determine planning applications.

The document identifies a series of key issues for the borough and the policy options that could help address them. It highlights the Council's preferred policy options for potential development management policies that will guide decision-making on development applications across Guildford borough. As part of this consultation GBC is seeking your thoughts on the preferred options identified and whether you have other comments on what the plan should contain.

If you would like to view the Issues and Preferred Options document, please visit the consultation homepage at: [LOCAL PLAN CONSULTATION](#). The consultation deadline is midday on 22nd July.

GUILDFORD VISION GROUP: RESIDENTS' SURVEY

Guildford Vision Group (GVG) is seeking help from residents to further shape and refine the future of Guildford town centre in the light of the virus lockdown and its consequences.

GVG believes that any town centre masterplan must reflect on and react to the effects of the virus. Retail was already under notice to change, thanks to the online revolution. Hospitality is now under the microscope and other aspects of town life will also inevitably face the consequences of its impact. There will be things we need more of, and things we will need less of.

For more detailed information on their thinking, visit www.guildfordvisiongroup.com

GVG is seeking our top ten ingredients for a great Guildford. This can include things you don't want to see, or see less of, e.g. traffic or ten storey buildings. Please send these to info@guildfordvisiongroup.com by 30 June.



Guildford Conservative Association

01483 300 330

Lock House Lodge, Knightons Lane, Dunsfold GU8 4NU

info@guildfordconservatives.com



GuildfordConservatives



Guildford_Cons

Angela Richardson MP

0207 219 5851

House of Commons, London SW1A 0AA

angela.richardson.mp@parliament.uk



**Guildford
Conservatives**